

Low Pressure Gauge

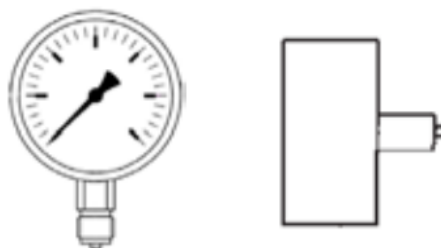
(NOT SUITABLE FOR LIQUIDS)

Model: KP63.11

Nominal Size:	63mm
Case and bezel material:	Stainless Steel
Connection:	Brass
Capsule material:	Copper Alloy
Working temperature:	Ambient = -25~60°C, Process = +80°C
Dial:	Black print (kPa) on white background
Ranges:	0~2.5 kPa to 0~60 kPa, pressure & vacuum
Connection:	1/4" BSPT
Window:	Snap-in-window Polycarbonate
Over Range Protection:	130% of full scale
Process Medium	Only suitable for air & gas
Pointer:	Aluminium black finish. External zero adjustment
Accuracy:	+/- 1.6% of full scale
Protection Rating:	IP32



KP 63.11 KPR 63.11



Range (in kPa)	Lower Mount P/N	Centre Back Mount P/N	Range (in kPa)	Lower Mount P/N	Centre Back Mount P/N
-60~0			0~2.5		1012649MP*
-40~0	1012605BMP		0~4	1012608MP	
-25~0	1012605MP		0~6	1012609MP	1012650MP*
-16~0			0~10	1012610MP	1012651MP*
-10~0	1012601MP		0~16		
-6~0			0~25	1012614MP	1012665MP*
-4~0			0~40	1012616MP	
-2.5~0			0~60	1012618MP	
-10/+15					
-15/+25					
Weight gms	200	200		200	200
Legend: * If front flange is required for panel mounting, please add 1012696MP + 1012697MP + 1012698MP + 1012699MP					

Revision: 1123

*The data provided above is for information purposes only and no warranty of accuracy or reliability is given.
Ross Brown Sales Pty Limited reserves the right to change or modify this data without prior notice.*