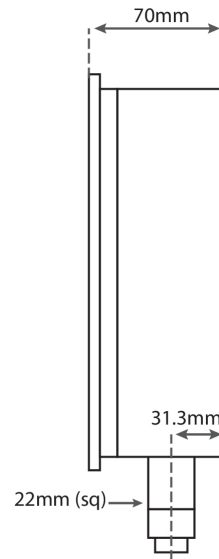
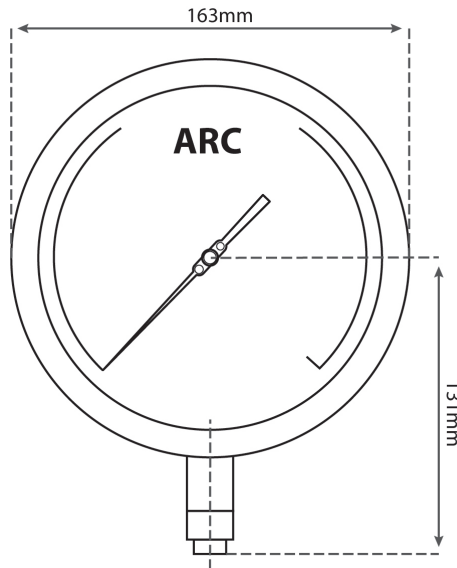
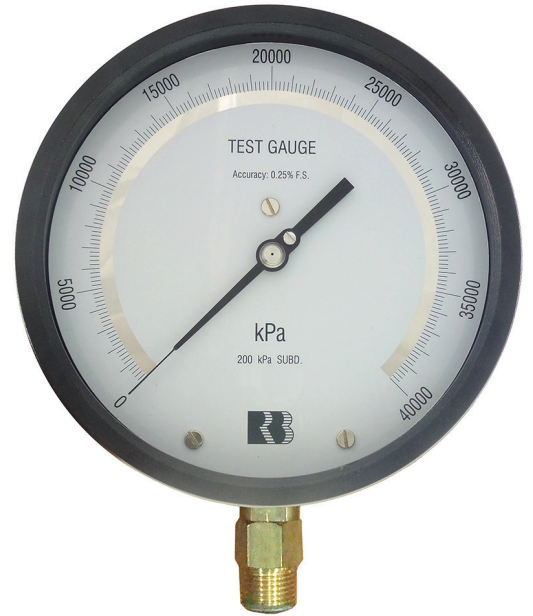




# Solid Front 160mm Test Gauge

**Model: 1601**

<b>Case material:</b>	Aluminium Casting Painted Black
<b>Connection:</b>	Brass
<b>Bourdon Tube Material:</b>	Beryllium Copper
<b>Working temperature:</b>	Ambient = +10°C to +30°C
<b>Dial:</b>	Aluminium, black print on white background Mirror backed to reduce parallax error
<b>Ranges:</b>	-100~0 kPa to 0~60,000 kPa
<b>Connection:</b>	1/2" BSPP lower mount, optional 1/2" NPT, 1/2" BSPT & 3/8" BSPT
<b>Window:</b>	Acrylic
<b>Blowout Protection:</b>	Solid Front with rear blowout
<b>Over Range Protection:</b>	120% from -100 kPa up to 40000 kPa 115% for 60000 kPa
<b>Movement:</b>	Stainless Steel
<b>Pointer:</b>	Knife edge, micro adjustable
<b>Accuracy:</b>	0.25% of full scale



Range (in kPa)	Lower Mount P/N	Increments	Range (in kPa)	Lower Mount P/N	Increments	Accessories
-100-0	2549990	0.5	0-4000	2551400	20	Crush Washer PTFE P/N: <b>2553996</b> To be used in conjunction with:
0-100	2550000	0.5	0-6000	2551600	20	
0-250	2550200	1	0-10000	2551700	50	Adaptor to 3/8" BSPT P/N: <b>2553997</b>
0-400	2550400	2	0-16000	2551800	50	Adaptor to 1/2" BSPT P/N: <b>2553998</b>
0-600	2550600	2	0-25000	2552000	100	
0-1000	2550800	5	0-40000	2552200	200	Adaptor to 1/2" NPT P/N: <b>2553999</b>
0-1600	2551000	5	0-60000	2552400	200	
0-2500	2551200	10				
<b>Weight gms</b>	1450					

Revision: 0620

The data provided above is for information purposes only and no warranty of accuracy or reliability is given.  
Ross Brown Sales Pty Limited reserves the right to change or modify this data without prior notice.