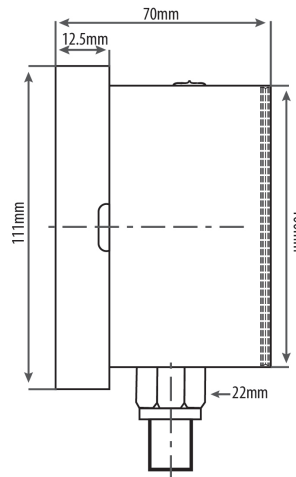
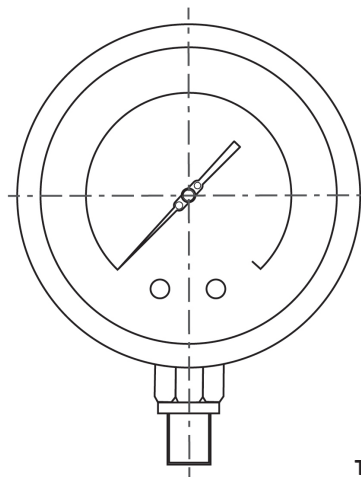




Solid Front 100mm Stainless Steel Pressure Gauge

Gauge Design:	Fully Safety Pattern, Solid Front Rear Blowout
Case and bezel material:	316 Stainless Steel Liquid Fillable
Connection:	316L Stainless Steel
Bourdon tube material:	316L Stainless Steel
Working temperature:	Ambient = -20/+65°C, Process = max +300°C
Dial:	Aluminium, Black Print on White Background
Ranges:	-100~0 kPa to 0~160,000 kPa
Connection:	1/2" NPT Lower Mount
Window:	Shatterproof Safety Glass
Blowout Protection:	Full Blowout Back
Surge Protection:	Internal Restrictor, 0.9mm
Over Range Protection:	125% of Full Scale up to 10,000 kPa 115% of Full Scale above 10,000 to 60,000 kPa 110% of Full Scale above 60,000 to 160000 kPa
Movement:	304 Stainless Steel
Pointer:	Micro-Adjustable
Accuracy:	1.0% of Full Scale



Type AI-F-2

Range (in kPa)	Lower Mount P/N	Range (in kPa)	Lower Mount P/N	Accessories
-100-0	2690000RB	0-1600	2690110RB	Glycerine Filling P/N 2701999
-100/+150	2690010RB	0-2500	2690120RB	Restrictor 0.5 mm P/N 2701988RB
-100/+300	2690020RB	0-4000	2690130RB	
-100/+500	2690030RB	0-6000	2690140RB	Safety Glass Lens P/N: 2701991RB
-100/+900	On request	0-8000	2690150RB	
-100/+1500	On request	0-10000	2690160RB	Pig-tail Sch80 316SS 1/2" NPT M & F P/N: 2911103RB
0-100	2690040RB	0-16000	2690170RB	
0-160	2690050RB	0-25000	2690180RB	Adjustable Restrictor 1/2" NPT M & F P/N: 2911130
0-250	2690060RB	0-40000	2690190RB	
0-400	2690070RB	0-60000	2690200RB	Block and Bleed valve 1/2" NPT M & F P/N: 7068530
0-600	2690080RB	0-80000	2690210RB	
0-800	2690090RB	0-100000	2690220RB	Gauge Cock 1/2" NPT M & F P/N: 7069000
0-1000	2690100RB	0-160000	On request	
Weight gms	760	Add 310 gms for glycerine filling		

Revision: 0720

The data provided above is for information purposes only and no warranty of accuracy or reliability is given.
Ross Brown Sales Pty Limited reserves the right to change or modify this data without prior notice.