

# Bourdon Tube Pressure Gauges

## Polyamide Screw Ring Case

**RK 63**

**RKG 63**

### Standard Versions

Information on general and metrological features (load limits / temperature limitations) and standard pressure ranges / scale divisions can be found in model overview 1000.

#### Accuracy (EN 837-1)

Class 1.6

Class 2.5 for pressure ranges 0-600 and 0-1,000 bar  
(0-10,000 and 0-15,000 psi)

#### Case

Screw ring, rugged plastic,  
glass fiber reinforced polyamide 6B

#### Case Protection Type (EN 60 529 / IEC 529)

IP 54,

IP 65 for model RKG

#### Blow-out Device

Rubber blow-out disc at the top of the case coverage

#### Case Ventilation

Rubber blow-out disc at the top of the case coverage

#### Case Filling

for model RKG: glycerine

#### Nominal Case Size

63 (mm) (2½")

#### Wetted Parts

Type -3: Connection: 1.4571 (316 stainless steel)

Bourdon tube: 1.4571 (316 stainless steel),  
argon arc welding,  
≤ 60 bar (800 psi) c-form,  
≥ 100 bar (1,500 psi) helical

Type -1: Connection: brass

Bourdon tube: bronze,  
≤ 40 bar (600 psi) soft-soldered, c-form,  
≥ 60 bar (800 psi) silver brazed, helical

#### Case Configuration

Connection: screwed

Position of the connection: bottom connection,  
optional lower back connection (r)

Mounting device: without, optional back flange for  
surface mounting (Rh) or u-clamp  
for panel mounting (T), see page 2

#### Pressure Ranges (EN 837-1)

0-0.6 bar (0-10 psi) to 0-1,000 bar (0-15,000 psi) for type -3

0-0.6 bar (0-10 psi) to 0- 600 bar (0-10,000 psi) for type -1

#### Process Connection

G ¼ B (¼" BSP)

#### Window

Polycarbonate

#### Movement

Stainless steel for type -3

Brass/German silver for type -1

#### Dial

Aluminum, black figures, white background

#### Pointer

Aluminum, black



### Ordering Information, Standard Pressure Ranges, Options:

see pages 3 and 4

### Special Versions and further options among others

- Other process connections upon request
- Other pressure ranges and / or special scales, e.g. double scale bar/psi, coloured fields or areas, dial inscriptions, negative scale etc.
- Version as refrigeration gauge with temperature scale
- Increased case protection type, e. g. IP 65 without case filling, upon request
- Other case fillings upon request
- Model RKG for ambient temperatures down to -40 °C (-40 °F) upon request. Our recommendation for ambient temperatures below -20 °C (-4 °F); models RChg resp. RChgG
- Position of connection radial at 3 o'clock, 9 o'clock or 12 o'clock (others upon request), or other than vertical installation (90°) for dry version
- GOST-version for Russia, Ukraine, Kazakhstan
- Sour gas-resistant version according to NACE

### Accessory:

Chemical seals: see catalogue-heading 7  
Other accessory: see catalogue-heading 11



# Case Configurations, Code Letters, Dimensional Data and Weights, Blow-out Device

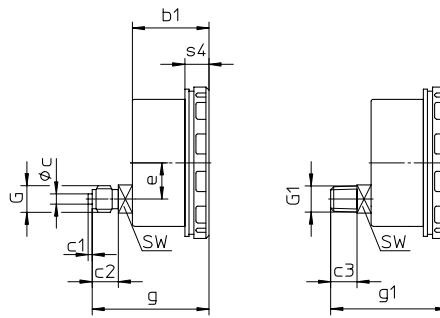
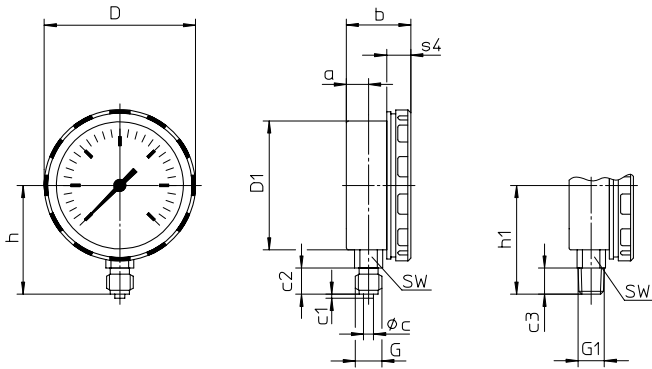
## Bottom connection

## Lower back connection

### No mounting device

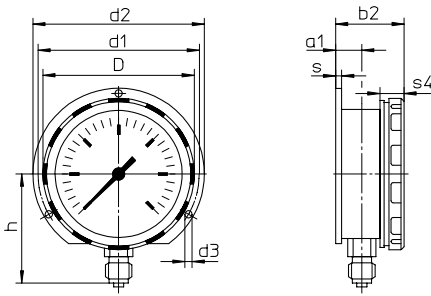
(no additional code letter)

code letter: r



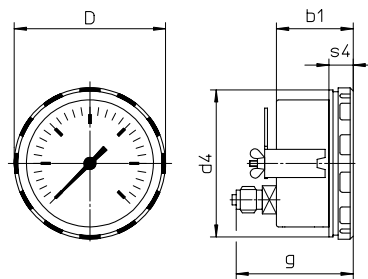
### Back flange for surface mounting

code letters: Rh



### U-clamp for switch panel mounting

code letters: rT



recommended panel cut out for  $\varnothing 64.5 \pm 0.5$  (0.02")

### Dimensional data (mm / inches) and weights (kg / lb)

NCS	a	a1	b	b1	b2	b3	c	c1	c2	c3	D	D1	D2	d1	d2	d3	d4	e	G	G1	g	g1	h <sup>±1</sup>	h1 <sup>±1</sup>
63 2½"	11 .43	13 .51	32 1.26	38 1.5	34 1.34	-	5 .2	2 .08	13 .51	13 .51	75 2.95	64 2.52	-	75 2.95	85 3.35	3.6 .14	73 2.87	18 .71	G ¼ B ¼" BSP M 12 x 1.5	¼" NPT	58 2.28	58 2.28	54 2.13	54 2.13

s	s1	s2	s3	s4	SW	SW1	approx. weight <sup>1)</sup>	
							RK	RKG
3 .12	-	-	-	12 .47	14 .55	-	0.14 .31	0.20 .44

<sup>1)</sup> Information for version without mounting device

## Ordering Information, Standard Pressure Ranges, Options

Basic Model:	Bourdon Tube Pressure Gauge, Polyamide Screw Ring Case		RK
Case Filling	without		without code letters
	glycerine		<b>G</b>
	fillable version		<b>(G)</b>
Nominal Case Size:	case- Ø 63 (mm)		<b>63</b>
Wetted Material:	copper alloy		<b>-1</b>
	stainless steel		<b>-3</b>
	Monel 0-1 bar (15 psi) to 0-1,000 bar (15,000 psi), movement stainless steel, laminated safety glass, bourdon tube Monel argon arc welding, ≤ 60 bar (1,000 psi) c-form, ≥ 100 bar (1,500 psi) helical, bottom connection, optional r		<b>-6</b>
Case Configuration:	case / connection	screwed	without code letters
	position of the connection:	bottom connection	without code letters
		lower back connection	<b>r</b>
	mounting device:	without	
back flange for surface mounting			<b>Rh</b>
u-clamp for switch panel mounting			<b>T</b>
Pressure Ranges:	-1,200 – 0 mbar	30" Hg vac. – 0	
	-0.6 – 0 bar		
	-1 – 0 bar		
	-1 – 0.6 bar	30" Hg vac. – 15 psi	
	-1 – 1.5 bar	30" Hg vac. – 30 psi	
	-1 – 3 bar	30" Hg vac. – 60 psi	
	-1 – 5 bar	30" Hg vac. – 100 psi	
	-1 – 9 bar	30" Hg vac. – 160 psi	
	-1 – 15 bar	30" Hg vac. – 200 psi	
		30" Hg vac. – 300 psi	
	0 – 0.6 bar	0 – 10 psi	
	0 – 1 bar	0 – 15 psi	
	0 – 1.6 bar		
	0 – 2.5 bar	0 – 30 psi	
	0 – 4 bar	0 – 60 psi	
	0 – 6 bar	0 – 100 psi	e. g. <b>0-6 bar</b>
	0 – 10 bar	0 – 160 psi	
	0 – 16 bar	0 – 200 psi	
	0 – 25 bar	0 – 300 psi	
	0 – 40 bar	0 – 600 psi	
	0 – 60 bar	0 – 800 psi	
		0 – 1,000 psi	
	0 – 100 bar	0 – 1,500 psi	
	0 – 160 bar	0 – 2,000 psi	
	0 – 250 bar	0 – 3,000 psi	
		0 – 4,000 psi	
	0 – 400 bar	0 – 5,000 psi	
		0 – 6,000 psi	
0 – 600 bar	0 – 10,000 psi		
0 – 1,000 bar for type -3 and -6	0 – 15,000 psi		
Process Connection:	standard thread	G ¼ B (¼"BSP)	<b>G ¼ B</b>
	options:	¼" NPT	<b>¼" NPT</b>
		M 12 x 1.5	<b>M 12 x 1,5</b>
		G ⅜ B (⅜"BSP)	<b>G ⅜ B</b>
		⅜" NPT	<b>⅜" NPT</b>
Options:	see page 4		
Example:			<b>RK 63-3 Rh, 0-6 bar, G ¼ B.</b>

## Further Options regarding Ordering Information

Basic Model: Bourdon Tube Pressure Gauge, Polyamide Screw Ring Case		RK																																																																																																											
Model Code:		see page 3																																																																																																											
Options:	<table border="0"> <tr> <td>adjustable pointer</td> <td></td> <td></td> </tr> <tr> <td>red mark</td> <td>on the dial</td> <td></td> </tr> <tr> <td>stationary</td> <td>on the dial,</td> <td></td> </tr> <tr> <td>red pointer</td> <td>adjustable when removable ring</td> <td></td> </tr> <tr> <td>stationary</td> <td>adjusting mechanism brass, nickelplated</td> <td></td> </tr> <tr> <td>red pointer</td> <td>with convex window made of acrylic glass, screwed</td> <td></td> </tr> <tr> <td></td> <td>adjustable externally</td> <td>removable key</td> </tr> <tr> <td></td> <td></td> <td>non-removable key</td> </tr> <tr> <td></td> <td>adjusting mechanism stainless steel</td> <td></td> </tr> <tr> <td></td> <td>with convex window made of acrylic glass, screwed</td> <td></td> </tr> <tr> <td></td> <td>adjustable externally</td> <td>removable key</td> </tr> <tr> <td></td> <td></td> <td>non-removable key</td> </tr> <tr> <td>min.- or max.-</td> <td>adjusting mechanism brass, nickelplated</td> <td></td> </tr> <tr> <td>drag indicator</td> <td>with convex window made of acrylic glass, screwed</td> <td></td> </tr> <tr> <td>2.5 bar (30 psi) and above</td> <td>adjustable externally</td> <td>removable key</td> </tr> <tr> <td></td> <td></td> <td>non-removable key</td> </tr> <tr> <td></td> <td>adjusting mechanism stainless steel</td> <td></td> </tr> <tr> <td></td> <td>with convex window made of acrylic glass, screwed</td> <td></td> </tr> <tr> <td></td> <td>adjustable externally</td> <td>removable key</td> </tr> <tr> <td></td> <td></td> <td>non-removable key</td> </tr> <tr> <td>receiver gauge 0.2-1 bar, scale 0-100%</td> <td></td> <td>linear</td> </tr> <tr> <td></td> <td></td> <td>square</td> </tr> <tr> <td>special adjustment (reference points = odd values, e. g. 100 KN = 8.735 bar)</td> <td></td> <td></td> </tr> <tr> <td>window</td> <td>laminated safety glass<sup>1)</sup> for type –1</td> <td></td> </tr> <tr> <td></td> <td>acrylic glass (PMMA)</td> <td></td> </tr> <tr> <td>movement</td> <td>stainless steel for type –1 (for –3 and –6 standard)</td> <td rowspan="16"><i>(order at the moment as cleartext)</i></td> </tr> <tr> <td>density examination</td> <td>with helium leak detection up to</td> </tr> <tr> <td>of the measuring unit</td> <td>10<sup>-9</sup> mbar l/s for types –3 and –6</td> </tr> <tr> <td>wetted parts, free of grease and oil, up to 0-600bar (0-10,000 psi)</td> <td>adjustment ≤ 250 bar (3,000 psi) with dry air, ≥ 400 bar (5,000 psi) with distilled water, dial marking: symbol cancelled oil can</td> </tr> <tr> <td>oxygen version up to 0-600 bar<sup>2)</sup> (0-10,000 psi)</td> <td>öfree of grease and oil, additional restrictor screw in the inlet port, orifice Ø 0.3 mm (0.01"), dial inscription: oxygen no version according to EN 837-1<sup>3)</sup></td> </tr> <tr> <td>silicone-free version</td> <td></td> </tr> <tr> <td>restrictor screw in pressure inlet port</td> <td>orifice Ø 0.8 mm (0.03")</td> </tr> <tr> <td>material: as process connection brass, stainless steel or Monel</td> <td>orifice Ø 0.6 mm (0.02") (not Monel)</td> </tr> <tr> <td></td> <td>orifice Ø 0.3 mm (0.01") (not Monel)</td> </tr> <tr> <td>measuring point marking</td> <td>stainless steel-plate 12 mm x 55 mm (0.47" x 2.17"), wire mounting or sticker on case coverage</td> </tr> <tr> <td></td> <td></td> </tr> <tr> <td></td> <td></td> </tr> <tr> <td></td> <td></td> </tr> <tr> <td></td> <td></td> </tr> <tr> <td></td> <td></td> </tr> <tr> <td></td> <td></td> </tr> </table>	adjustable pointer			red mark	on the dial		stationary	on the dial,		red pointer	adjustable when removable ring		stationary	adjusting mechanism brass, nickelplated		red pointer	with convex window made of acrylic glass, screwed			adjustable externally	removable key			non-removable key		adjusting mechanism stainless steel			with convex window made of acrylic glass, screwed			adjustable externally	removable key			non-removable key	min.- or max.-	adjusting mechanism brass, nickelplated		drag indicator	with convex window made of acrylic glass, screwed		2.5 bar (30 psi) and above	adjustable externally	removable key			non-removable key		adjusting mechanism stainless steel			with convex window made of acrylic glass, screwed			adjustable externally	removable key			non-removable key	receiver gauge 0.2-1 bar, scale 0-100%		linear			square	special adjustment (reference points = odd values, e. g. 100 KN = 8.735 bar)			window	laminated safety glass <sup>1)</sup> for type –1			acrylic glass (PMMA)		movement	stainless steel for type –1 (for –3 and –6 standard)	<i>(order at the moment as cleartext)</i>	density examination	with helium leak detection up to	of the measuring unit	10 <sup>-9</sup> mbar l/s for types –3 and –6	wetted parts, free of grease and oil, up to 0-600bar (0-10,000 psi)	adjustment ≤ 250 bar (3,000 psi) with dry air, ≥ 400 bar (5,000 psi) with distilled water, dial marking: symbol cancelled oil can	oxygen version up to 0-600 bar <sup>2)</sup> (0-10,000 psi)	öfree of grease and oil, additional restrictor screw in the inlet port, orifice Ø 0.3 mm (0.01"), dial inscription: oxygen no version according to EN 837-1 <sup>3)</sup>	silicone-free version		restrictor screw in pressure inlet port	orifice Ø 0.8 mm (0.03")	material: as process connection brass, stainless steel or Monel	orifice Ø 0.6 mm (0.02") (not Monel)		orifice Ø 0.3 mm (0.01") (not Monel)	measuring point marking	stainless steel-plate 12 mm x 55 mm (0.47" x 2.17"), wire mounting or sticker on case coverage												
adjustable pointer																																																																																																													
red mark	on the dial																																																																																																												
stationary	on the dial,																																																																																																												
red pointer	adjustable when removable ring																																																																																																												
stationary	adjusting mechanism brass, nickelplated																																																																																																												
red pointer	with convex window made of acrylic glass, screwed																																																																																																												
	adjustable externally	removable key																																																																																																											
		non-removable key																																																																																																											
	adjusting mechanism stainless steel																																																																																																												
	with convex window made of acrylic glass, screwed																																																																																																												
	adjustable externally	removable key																																																																																																											
		non-removable key																																																																																																											
min.- or max.-	adjusting mechanism brass, nickelplated																																																																																																												
drag indicator	with convex window made of acrylic glass, screwed																																																																																																												
2.5 bar (30 psi) and above	adjustable externally	removable key																																																																																																											
		non-removable key																																																																																																											
	adjusting mechanism stainless steel																																																																																																												
	with convex window made of acrylic glass, screwed																																																																																																												
	adjustable externally	removable key																																																																																																											
		non-removable key																																																																																																											
receiver gauge 0.2-1 bar, scale 0-100%		linear																																																																																																											
		square																																																																																																											
special adjustment (reference points = odd values, e. g. 100 KN = 8.735 bar)																																																																																																													
window	laminated safety glass <sup>1)</sup> for type –1																																																																																																												
	acrylic glass (PMMA)																																																																																																												
movement	stainless steel for type –1 (for –3 and –6 standard)	<i>(order at the moment as cleartext)</i>																																																																																																											
density examination	with helium leak detection up to																																																																																																												
of the measuring unit	10 <sup>-9</sup> mbar l/s for types –3 and –6																																																																																																												
wetted parts, free of grease and oil, up to 0-600bar (0-10,000 psi)	adjustment ≤ 250 bar (3,000 psi) with dry air, ≥ 400 bar (5,000 psi) with distilled water, dial marking: symbol cancelled oil can																																																																																																												
oxygen version up to 0-600 bar <sup>2)</sup> (0-10,000 psi)	öfree of grease and oil, additional restrictor screw in the inlet port, orifice Ø 0.3 mm (0.01"), dial inscription: oxygen no version according to EN 837-1 <sup>3)</sup>																																																																																																												
silicone-free version																																																																																																													
restrictor screw in pressure inlet port	orifice Ø 0.8 mm (0.03")																																																																																																												
material: as process connection brass, stainless steel or Monel	orifice Ø 0.6 mm (0.02") (not Monel)																																																																																																												
	orifice Ø 0.3 mm (0.01") (not Monel)																																																																																																												
measuring point marking	stainless steel-plate 12 mm x 55 mm (0.47" x 2.17"), wire mounting or sticker on case coverage																																																																																																												

### Special Versions: Please describe your requirements clearly

<sup>1)</sup> not for stationary pointer resp. drag indicator

<sup>2)</sup> for instruments without case filling

<sup>3)</sup> EN 837-1 in connection with oxygen version requires safety category S2 or S3