

PRESSURE HANDLER® ATM SALES GUIDE



INTRODUCTION

Drain-All No-loss condensate traps provide unique, high quality, energy efficient, reliable product solutions for draining and moving liquids such as: (1) condensate removal from compressed air systems, (2) oils and lubricants from manufacturing or test equipment, and (3) liquids from atmospheric and vacuum systems. Drain-All condensate traps are produced under a certified ISO 9001 Quality Management System to ensure the product exceeds customer expectations.

Drain-All products are industrially robust, require little maintenance and since they do not require any electrical connections, can be easily installed on equipment at any point in a system. The unique design maintains a liquid barrier inside the trap which prevents the escape of costly process gas. As a result, no-loss condensate traps provide energy savings when compared to timer drains and manual valves. These patented devices are backed by an excellent warranty and a strong technical support staff who are available to assist customers in developing engineered solutions for all of their liquid drainage problems.

The Drain-All product line includes a wide array of products, options and accessories which enable customers to customize their particular liquid drainage systems. The Drain-All condensate drains are compatible with all manufactures of compressors, aftercoolers, filters/ separators, receivers and dryers.

SPECIFICATIONS	
Part Number	PH50-0GAAA
Max Liquid Temp - °F (°C)	170 (76.7)
Max Liquid Pressure – PSIG (BARG)	Atmospheric
Control Air Min – PSIG (BARG)	80 (5.5)
Control Air Max – PSIG (BARG)	130 (9.0)
Ht – inches (cm)	11 (27.9)
Width – inches (cm)	10-3/4 (27.3)
Depth (Inlet/BV) – inches (cm)	13-1/2 (34.3)
Inlet / Outlet – NPT	1/2
Control Air – NPT	1/4
Balance Line – NPT	N/A
Max Capacity @ 110 PSI - GPM (kg/hr)	1.5 (340) *
Weight – LBS (KG)	22 (10.0)

* Varies with pressure/piping

Quality System ISO 9001 Certified United States Patent: 5,983,919

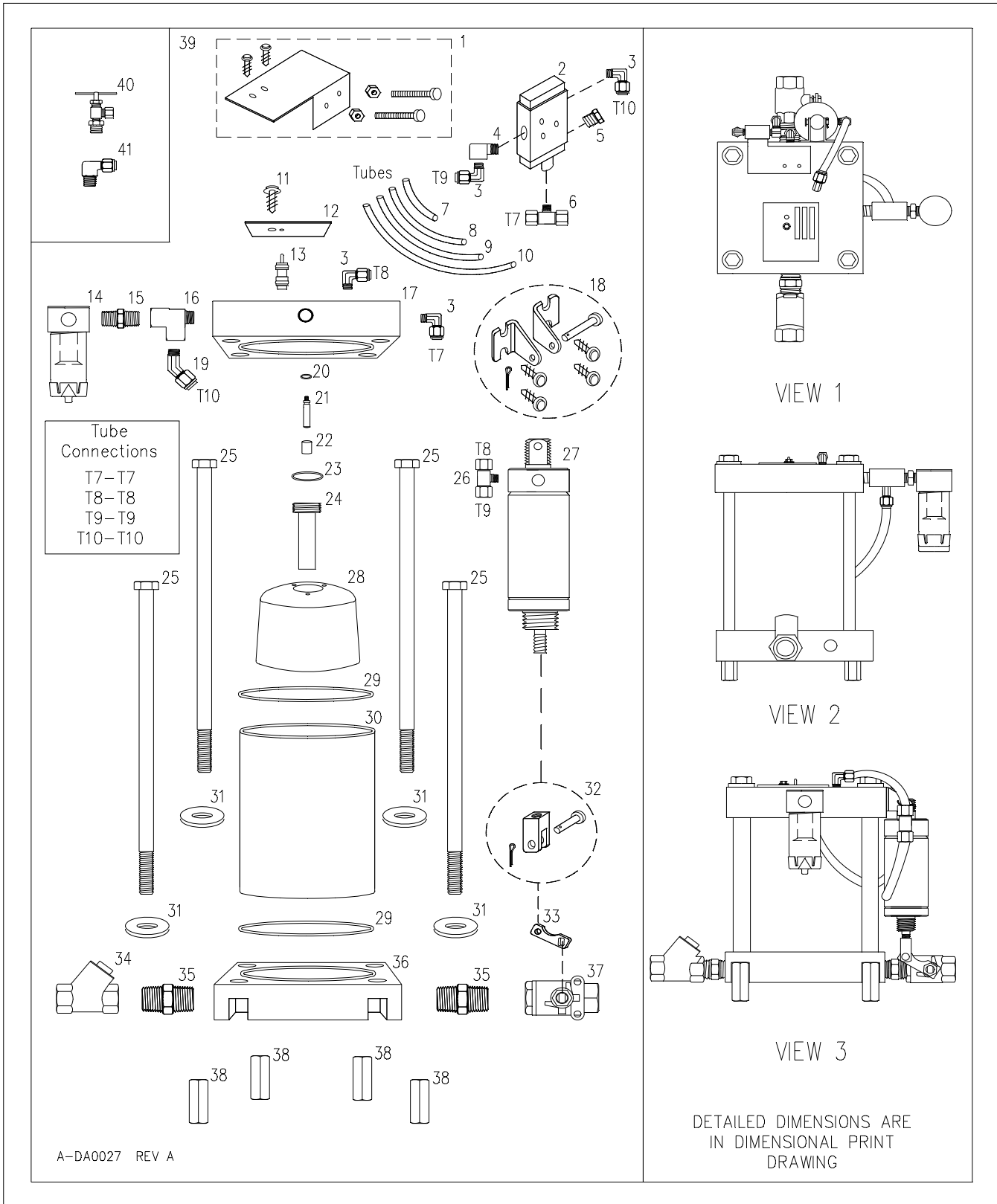


ABN 28 000 690 362
TEL: (02) 8855 1700
EMAIL: sales@rossbrownsales.com.au
WEBSITE: www.rossbrownsales.com.au



a product of
Control Devices, LLC

COMPONENT PARTS DRAWING



PARTS & MATERIALS OF CONSTRUCTION

CODE	PART #	ITEM	DESCRIPTION/REMARKS	Qty
1	300775	Valve Attachment Kit	Includes:	1
			(1) Valve Attachment Bracket-Stainless Steel	
			(2) Screws-Zinc Plated Steel	
			(2) Screws,Self Tapping- Zinc Plated Steel	
			(2) Nuts-Zinc Plated Steel	
2	300760	3-Way Valve	Black Enamel Finished Aluminum	1
3	301000	Elbow Fitting	Brass	4
4	300128	Elbow Fitting	Brass	1
5	301215	Port Screen	Coated Steel Body, Bronze Screen	1
6	101000	Screen Kit Assembly	Brass Tee, Aluminum disk, (2) SS Screens	1
7	350351	Control Air Tube, 1/4" Dia x 3.375" L	Nylon	1
8	350354	Control Air Tube, 1/4" Dia x 4.0" L	Nylon	1
9	350352	Control Air Tube, 1/4" Dia x 7" L	Nylon	1
10	350357	Control Air Tube, 1/4" Dia x 10" L	Nylon	1
11	302500	Screw, Self-Tapping, #10 x 5/8" L	Zinc Plated Steel	1
12	302806	Name Plate	Aluminum	1
13	300600	Push to Test Button	Brass	1
14	300700	Control Air Filter Assembly	Aluminum Head	1
15	300800	Hex Nipple	Brass	1
16	301127	Tee Fitting	Brass	1
17	170100	Head	Aluminum	1
18	300301	Cylinder Mount Kit	Includes:	1
			(2) Brackets-Electroless Nickel Plated	
			(4) Screws-Zinc Plated Steel	
			(1) Mount Pin-Electroless Nickel Plated	
			(1) Cotter Pin-Stainless Steel	
19	301210	Elbow Fitting	Brass	1
20	302210	Valve Stem O-ring	Viton, Brown	1
21	100730	Valve Stem, 2.235" L	O-ring Seal, Aluminum	1
22	400100	Inner Magnet	Ceramic with Viton Ends and Covering	1
23	302215	Center Tube O-ring	Viton, Brown	1
24	200170	Center Tube, 4.5" L	O-ring Seal, Aluminum	1
25	302270	Hex Bolt	Zinc Plated Steel	4
26	301100	Tee Fitting	Brass	1
27	300314	Pneumatic Cylinder, 2" Dia	40 - 130 PSI, Stainless Steel Body and Rod, Aluminum Ends	1
28	100480	Float	Polyurethane, Bullet Shaped	1
29	302200	Sleeve O-ring	Viton, Brown	2
30	100300	Sleeve, .125" TK	Epoxy Fiberglass, Translucent	1
31	301570	Washer	Zinc Plated Steel	4
32	300292		Includes:	1
			(1) Clevis-Electroless Nickel Plated	
			(1) Clevis Pin-Electroless Nickel Plated	
			(1) Cotter Pin-Stainless Steel	
33	100807	Control Lever	Stainless Steel for 1/2" NPT Ball Valve	1
34	300250	Check Valve, 1/2" NPT	Brass	1
35	300900	Hex Nipple	Brass	2
36	170200	Base	Aluminum	1
37	300207	Heavy Duty Ball Valve, 1/2" NPT	Double O-ring Viton Stem Seals, Nickel Plated Brass	1
38	302370	Coupling Nut	Zinc Plated Steel	4
39	351135	Installation Kit	Includes:	1
40			(1) Needle Valve-Brass	
41			(1) Elbow Fitting-Brass	

DIMENSIONAL PRINT

