



- 1 SPDT /
- 2 DPDT - Normally Open / Normally Closed (NO/NC)
- Pressure range up to 250 bar
- ATEX / GL / VdS / UL approvals -optional
- Scale for simple adjustments
- Wide range of variations
- Acc. to EN 60947



MDR – F ..H-S

#### Applications:

Air pressure technology, water pressure technology, construction machinery, water-based extinguishing systems, fire protection units, oil pressure monitoring, mining, chemical, industry, railway vehicles, offshore, shipping, vacuum technology, calibration technology, heating systems

Specific applied approval

#### Application

The Condor pressure switch series MDR-F can be **universally used** and are suitable for:

- Monitoring and controlling the pressure of liquids or gaseous media in pipelines, tanks, vats, pressure vessels and installations.
- Tasks in process control, cooling, pneumatics and hydraulics.
- Pressure monitoring of cooling circuits and lubrication systems on various types of machinery.
- Automatic switching of pump and compressor motors for supplying water to dwellings, booster pumps, fire-fighting equipment and on compressed air systems.

When the pressure reaches the upper switching point, the micro switch contacts change position. In normal cases e.g. a connected motor is switched off (up to 550 watts direct or using additional switches like a contactor etc.). Should the pressure fall below the lower switch point, then the micro switch contact returns to its default position and the motor is switched on.

The upper and lower switching points can be set independently using a screw driver. Both switching points can be read off the scale.

Pressure connection, pressure sensing element and electrical connections are all fitted on to a die-cast aluminum base. The sealable transparent, polycarbonate cover protects the scales and switch against environmental effects.

#### Mode of operation:

The pressure of the monitored medium operates against a diaphragm, bellows or a plunger all of which have different media resistance. Switching operation is carried out with the use of a micro switch ensuring flutter-free switching

#### Standard scope of delivery:

- rubber grommets
- MDR-F..H Die-cast aluminum flange
- MDR-F..Y Plastic flange (in particular for use in water technology applications)
- With industrial screw connection  
(Industrial clamp version available upon request)

Besides the standard types with Perbunan diaphragms, the following new types are available:

- Pressure switch with stainless steel pressure sensing element e.g. for liquid fuels, oils up to 200°C etc.
- High pressure switch with plastic plunger press. sensing element with stainless steel connection up to 250 bar
- Pressure switch with manual reset function and die-cast aluminum flange for oil, water and air etc.
- Pressure switch with Viton diaphragm and die-cast aluminum flange for increased media resistance
- Pressure switch with VdS approval for fire-extinguishing systems / fire protection-installations
- Pressure switch with GL approval for ship building and applications intended for use at sea
- Pressure switch with Atex approval in mining and chemicals plants that are at risk of explosion
- Pressure switch with UL approval for the North American market
- Vacuum
- DPDT

The MDR-F pressure switch program is extended continuously. A current status of the existing designs and approvals is available on our homepage.

## Overview



Type designation	MDR F.H Die-cast aluminum	MDR-F.Y Plastic	MDR-F.HE Stainless steel	MDR-F.HH High pressure	MDR-F. Reset function
Contact function	1 SPDT*1	1 SPDT*1	1 SPDT*1	1 SPDT*1	1 SPDT*1
Voltage	230 V	230 V	230 V	230 V	230 V
Motor switching capacity	0,55 kW	0,55 kW	0,55 kW	0,55 kW	0,55 kW
Current AC 15	4 A	4 A	4 A	4 A	4 A
Flange types <b>Standard (bold)</b>	<b>G 3/8"</b> G 1/2" G 1/4" 1/4" NPT Inner thread (Die-cast aluminum)	<b>G 3/8"</b> Inner thread (plastic)	<b>G 1/4"</b> Inner thread (Stainless steel)	<b>G 3/8"</b> Inner thread (Stainless steel + throttle)	Flanges on demand
Pressure ranges (bar) Cut-out pressure from - to	6 0,11 - 32	5 0,11 - 16	2 1 - 30	3 8 - 250	Pressure ranges on demand
Degree of Protection	IP 54 / IP 65	IP 54 / IP 65	IP 54 / IP 65	IP 54 / IP 65	IP 54 / IP 65
Cable glands	WN / M 20	WN / M 20	WN / M 20	WN / M 20	WN / M 20
Permissible media temperature *2	- 25 .. + 70 °C	- 20 .. + 50 °C	200 °C	70 °C	according to selection
Type designation	VdS to 16 bar UL/GL Atex	VdS to 10 bar GL to 12,5 bar Atex	- - Atex	UL / GL Atex	- GL on request Atex on request

\*1 = SPDT with gold-flashed contacts / 2 SPDT / NC + NO for special applications - on request

\*2 = Other diaphragms and further temperature ranges on request



Type designation	MDR – F Vacuum
Contact function	1 SPDT*1 / 2 SPDT's
Voltage	230 V
Motor switching capacity	0,55 kW
Current AC 15	4 A
Flange types <b>Standard (bold)</b>	<b>G 1/4"</b> Inner thread
Pressure ranges Cut-out pressure from ... to	2 - 0,7 - 3 bar
Degree of Protection	IP 54 / IP 65
Cable glands	WN / M 20
Permissible media temperature *2	- 25 .. + 70 °C
Type designation	- - Atex

\*1 = SPDT with gold-flashed contacts for special applications on request

\*2 = further temperature ranges on request

The data provided above is for information purposes only and no warranty of accuracy or reliability is given.  
Ross Brown Sales Pty Limited reserves the right to change or modify this data without prior notice.

**MDR-F standard version with die-cast aluminium flange and Perbunan diaphragm - for oil, water and air etc.  
Pressure switch with industrial screw terminals version (industrial cage clamp version available).**

Connection: H G 3/8" inner thread \* \* - suffix "G" for gold-flashed contacts

Order reference	Type Code	Adjustable cut-in pressure (bar)	Smallest pressure diff. (bar)*	Adjustable cutout pressure (bar)	Weight (in g)	Part No.	Part No. (RBS)
MDR-F 2H-S	MDR-F 2 HAA SAA A 005A015	0,04 ... 1,89	0,07 0,11	0,11 ... 2	460	253501	<b>3800113</b>
MDR-F 2HG-S	MDR-F 2 HAA SBA A 005A015	0,04 ... 1,89	0,07 0,11	0,11 ... 2	460	253518	On Request
MDR-F 4H-S	MDR-F 4 HAA SAA A 010A030	0,07 ... 3,75	0,15 0,25	0,22 ... 4	460	253525	<b>3800042</b>
MDR-F 4HG-S	MDR-F 4 HAA SBA A 010A030	0,07 ... 3,75	0,15 0,25	0,22 ... 4	460	253532	On Request
MDR-F 8H-S	MDR-F 8 HAA SAA A 020A060	0,2 ... 7,5	0,3 0,5	0,5 ... 8	460	253549	On Request
MDR-F 8HG-S	MDR-F 8 HAA SBA A 020A060	0,2 ... 7,5	0,3 0,5	0,5 ... 8	460	253556	On Request
MDR-F 10H-S	MDR-F 10 HAA SAA A 040A050	0,3 ... 9,2	0,4 0,8	0,7 ... 10	460	253563	<b>3800048</b>
MDR-F 10HG-S	MDR-F 10 HAA SBA A 040A050	0,3 ... 9,2	0,4 0,8	0,7 ... 10	460	253570	On Request
MDR-F 16H-S	MDR-F 16 HAA SAA A 040A120	0,4 ... 15	0,6 1,0	1 ... 16	460	253587	<b>3800046</b>
MDR-F 16HG-S	MDR-F 16 HAA SBA A 040A120	0,4 ... 15	0,6 1,0	1 ... 16	460	253594	<b>3800047</b>
MDR-F 32H-S	MDR-F 32 HAA SAA A 100A200	0,8 ... 30	1,2 2,0	2 ... 32	460	253600	On Request
MDR-F 32HG-S	MDR-F 32 HAA SBA A 100A200	0,8 ... 30	1,2 2,0	2 ... 32	460	253617	On Request

\* lower ... upper end of range

\*\* G1/4" + G1/2" innerthread - on demand

**MDR-F standard version with plastic flange and Perbunan diaphragm - e.g. for demineralized water.  
Pressure switch with industrial screw terminals version (industrial cage clamp version available).**

Pressure connection: Y G 3/8" inner thread \*\* - suffix "G" for gold-flashed contacts

Order reference	Type Code	Adjustable cut-in pressure (bar)	Smallest pressure diff. (bar)*	Adjustable cutout pressure (bar)	Weight (in g)	Part No.	Part No. (RBS)
MDR-F 2Y-S	MDR-F 2 YAA SAA A 005A015	0,04 ... 1,89	0,07 0,11	0,11 ... 2	410	253624	On Request
MDR-F 2YG-S	MDR-F 2 YAA SBA A 005A015	0,04 ... 1,89	0,07 0,11	0,11 ... 2	410	253631	On Request
MDR-F 4Y-S	MDR-F 4 YAA SAA A 010A030	0,07 ... 3,75	0,15 0,25	0,22 ... 4	410	253648	<b>3800044</b>
MDR-F 4YG-S	MDR-F 4 YAA SBA A 010A030	0,07 ... 3,75	0,15 0,25	0,22 ... 4	410	253655	On Request
MDR-F 8Y-S	MDR-F 8 YAA SAA A 020A060	0,2 ... 7,5	0,3 0,5	0,5 ... 8	410	253662	On Request
MDR-F 8YG-S	MDR-F 8 YAA SBA A 020A060	0,2 ... 7,5	0,3 0,5	0,5 ... 8	410	253679	On Request
MDR-F 10Y-S	MDR-F 10 YAA SAA A 040A050	0,3 ... 9,2	0,4	0,8 0,7 ... 10	410	253686	On Request
MDR-F 10YG-S	MDR-F 10 YAA SBA A 040A050	0,3 ... 9,2	0,4	0,8 0,7 ... 10	410	253693	On Request
MDR-F 16Y-S	MDR-F 16 YAA SAA A 040A120	0,4 ... 15	0,6	1,0 1 ... 16	410	253709	On Request
MDR-F 16YG-S	MDR-F 16 YAA SBA A 040A120	0,4 ... 15	0,6	1,0 1 ... 16	410	253716	On Request

\* lower ... upper end of range

\*\* G1/4" + G1/2" innerthread - on demand

**MDR-F features Pressure connection and pressure transducer element stainless steel for liquid fuels, oils up to 200 ° C, etc..**

**Pressure switch with industrial screw terminals version (industrial cage clamp version available).**

Pressure connection: G 1/4" female thread - suffix "G" for gold-plated contacts.

Order reference	Type Code	Adjustable cut-in pressure (bar)	Smallest pressure diff. (bar)*	Adjustable cutout pressure (bar)	Weight (in g)	Part No.	Part No. (RBS)
MDR-F 12HE-S	MDR-F 12 HEC SAA A 060A070	0,5 ... 11,2	0,5 0,8	1 ... 12	520	253723	On Request
MDR-F 12HEG-S	MDR-F 12 HEC SBA A 060A070	0,5 ... 11,2	0,5 0,8	1 ... 12	520	253730	On Request
MDR-F 30HE-S	MDR-F 30 HEC SAA A 160A200	1 ... 26,4	3,0 3,6	4 ... 30	520	253747	On Request
MDR-F 30HEG-S	MDR-F 30 HEC SBA A 160A200	1 ... 26,4	3,0	3,6 4 ... 30	520	253754	On Request

\* lower ... upper end of range

**MDR-F high-pressure switch version (up to 250 bar) with plastic plunger press. sensing element with stainless steel connection - for oil, water and air etc.**

**Pressure switch with industrial screw terminals version (industrial cage clamp version available).**

Pressure connection: HH G 3/8" inner thread - suffix "G" for gold-flashed contacts

Order reference	Type Code	Adjustable cut-in pressure (bar)	Smallest pressure diff. (bar)*	Adjustable cutout pressure (bar)	Weight (in g)	Part No.	Part No. (RBS)
MDR-F 60HH-S	MDR-F 60 HHA SAA A 200A400	4 ... 52	4 8	8 ... 60	570	253761	<b>3800055</b>
MDR-F 60HHG-S	MDR-F 60 HHA SBA A 200A400	4 ... 52	4 8	8 ... 60	570	253778	On Request
MDR-F 120HH-S	MDR-F 120 HHA SAA A 200A800	8 ... 104	8 16	16 ... 120	570	253785	<b>3800065</b>
MDR-F 120HHG-S	MDR-F 120 HHA SBA A 200A800	8 ... 104	8 16	16 ... 120	570	253792	On Request
MDR-F 250HH-S	MDR-F 250 HHA SAA A 100B200	14 ... 226	12 24	26 ... 250	570	253808	On Request
MDR-F 250HHG-S	MDR-F 250 HHA SBA A 100B200	14 ... 226	12 24	26 ... 250	570	253815	On Request

\* lower ... upper end of range

**MDR-F version with reset function (Hmin / Hmax and Htro) with die-cast aluminium flange and Perbunan diaphragm - for oil, water and air etc.**

**Pressure switch with industrial screw terminals version (industrial cage clamp version available).**

Pressure connection: H G 3/8" inner thread

**MDR-F .. Hmax (SPDT with manual reset max.)**

When pressure rises above the upper setting value, contact 11-12 opens and contact 11-14 closes and latches. When the pressure falls below the upper setting value, the contact can be released with the manual reset button.

**MDR-F .. Hmin (SPDT with manual reset min.)**

After pressure rises above the lower setting value, the function is activated by pressing the manual reset button. When the pressure falls, contact 11-12 closes and opens contact 11-14 when reaching the lower cut-in value. Since the upper switching point (cut-out pressure) of the reset pressure switch must lie above the maximum cut-out pressure of the apparatus, the switching state remains until the manual reset button is pressed again.

**MDR-F .. Htro (SPDT with manual reset as run-dry protection)**

Typically, the switch is connected in series with the control circuit. For pressure increase, the manual reset button must be held until the pressure lies beyond the monitoring point. When the pressure falls below the monitoring point, contact 11-12 closes and contact 11-14 opens. When the pressure automatically rises above 10% of the monitored pressure, contact 11-12 opens and contact 11-14 closes again automatically, otherwise, a restart using the manual reset button must be carried out again. NOTICE: Should there not be a rise in pressure when pressing the button, discontinue pressing the button as a fault in the system must be present.

Order reference	Type Code	Adjustable cut-in pressure (bar)	Smallest pressure diff. (bar)*	Adjustable cutout pressure (bar)	Weight (in g)	Part No.	Part No. (RBS)
MDR-F 2Hmax-S	MDR-F 2 HAA SAH A XXXA015	-	-	0,11 ... 2	430	254065	On Request
MDR-F 4Hmax-S	MDR-F 4 HAA SAH A XXXA030	-	-	0,22 ... 4	430	254072	On Request
MDR-F 8Hmax-S	MDR-F 8 HAA SAH A XXXA060	-	-	0,5 ... 8	430	254089	On Request
MDR-F 10Hmax-S	MDR-F 10 HAA SAH A XXXA075	-	-	0,7 ... 10	430	254096	On Request
MDR-F 16Hmax-S	MDR-F 16 HAA SAH A XXXA120	-	-	1 ... 16	430	254102	On Request
MDR-F 32Hmax-S	MDR-F 32 HAA SAH A XXXA240	-	-	2 ... 32	430	254119	On Request
MDR-F 2Hmin-S *1	MDR-F 2 HAA SAL A 005A015	0,04 ... 1,89	0,07 0,11	0,11 ... 2	430	254126	On Request
MDR-F 4Hmin-S *1	MDR-F 4 HAA SAL A 010A030	0,07 ... 3,75	0,15 0,25	0,22 ... 4	430	254133	On Request
MDR-F 8Hmin-S *1	MDR-F 8 HAA SAL A 020A060	0,2 ... 7,5	0,3 0,5	0,5 ... 8	430	254140	On Request
MDR-F 10Hmin-S *1	MDR-F 10 HAA SAL A 025A075	0,3 ... 9,2	0,4 0,8	0,7 ... 10	430	254157	On Request
MDR-F 16Hmin-S *1	MDR-F 16 HAA SAL A 040A120	0,4 ... 15	0,6	1,0 1 ... 16	430	254164	On Request
MDR-F 32Hmin-S *1	MDR-F 32 HAA SAL A 080A240	0,8 ... 30	1,2	2,0 2 ... 32	430	254171	On Request
MDR-F 2Htro-S	MDR-F 2 HAA SAG A 005AXXX	0,04 ... 1,89	-	-	430	254188	On Request
MDR-F 4Htro-S	MDR-F 4 HAA SAG A 010AXXX	0,07 ... 3,75	-	-	430	254195	On Request
MDR-F 8Htro-S	MDR-F 8 HAA SAG A 020AXXX	0,2 ... 7,5	-	-	430	254201	On Request
MDR-F 10Htro-S	MDR-F 10 HAA SAG A 025AXXX	0,3 ... 9,2	-	-	430	254218	On Request
MDR-F 16Htro-S	MDR-F 16 HAA SAG A 040AXXX	0,4 ... 15	-	-	430	254225	On Request
MDR-F 32Htro-S	MDR-F 32 HAA SAG A 080AXXX	0,8 ... 30	-	-	430	254232	On Request

\* lower ... upper end of range

\* 1 The minimum-pressure to be overseen and the operating-pressure must be in the pressure-spectrum of the cut-in-pressure

The data provided above is for information purposes only and no warranty of accuracy or reliability is given.  
Ross Brown Sales Pty Limited reserves the right to change or modify this data without prior notice.

**MDR-F version with die-cast aluminium flange and Viton diaphragm for enhanced media resistance.  
Pressure switch with industrial screw terminals version (industrial cage clamp version available).**

Pressure connection: H G 3/8" inner thread

Order reference	Type Code	Adjustable cut-in pressure (bar)	Smallest pressure diff. (bar)*	Adjustable cutout pressure (bar)	Weight (in g)	Part No.	Part No. (RBS)
MDR-F 2HV-S	MDR-F 2 HVA SAA A 005A015	0,04 ... 1,89	0,07 0,11	0,11 ... 2	410	253884	On Request
MDR-F 4HV-S	MDR-F 4 HVA SAA A 010A030	0,07 ... 3,75	0,15 0,25	0,22 ... 4	410	253891	On Request
MDR-F 8HV-S	MDR-F 8 HVA SAA A 020A060	0,2 ... 7,5	0,3 0,5	0,5 ... 8	410	253907	On Request
MDR-F10 HV-S	MDR-F 10 HVA SAA A 040A050	0,3 ... 9,2	0,4 0,8	0,7 ... 10	410	253914	On Request
MDR-F 16HV-S	MDR-F 16 HVA SAA A 040A120	0,4 ... 15	0,6 1,0	1 ... 16	410	253921	On Request
MDR-F 32HV-S	MDR-F 16 HVA SAA A 100A200	0,8 ... 30	1,2 2,0	2 ... 32	410	253938	On Request

\* lower ... upper end of range

**MDR-F VdS version for water-based extinguishing systems / fire-fighting equipment**

These pressure switches are primarily conceived for the use in firmly installed water extinguishing systems / fire-fighting equipments and approved from the VdS damage-prevention under the NO. G 4090008.

In particular, selective examinations, the request-profiles, the quality and the functionality intensively are tested. Dependent on the use there are:

- Alarm pressure switches (MDR-F 2...VdS...), which are manufactured with a pressure range from 0,35 to 1 bar with minimal difference, and
- Pressure switches (MDR-F X...VdS...), with 10, 12.5 or 16 bar set for X, which limit the maximum pressure



VdS pressure switches for water extinguishing systems / fire-fighting equipments

difference between cut-in and cut-out pressure to 1,5 bar. As MDR-F... VdS with reset function, standard only the alarm pressure switch is as max.-Reset listed. However, it is all VdS pressure switch with each reset function (see overview MDR-F with reset function), alternatively a Viton diaphragm and / or also a flange with 3/8" inner-screw threads on inquiry available.

Moreover, customer-specific boards with own circuits and LED in integrated design are available as well as realisable. Further information can be seen on our homepage: [www.condor-cpc.com](http://www.condor-cpc.com).

Please take into account that the use of the pressure switch with plastic flange is restricted up to 10 bar.

**Fire protection with die-cast aluminium flange and Perbunan diaphragm**

**Pressure switch with industrial screw terminals version (industrial cage clamp version available).**

Pressure connection: H G 1/2" inner thread

Order reference	Type Code	Adjustable cut-in pressure (bar)	Smallest pressure diff. (bar)*	Adjustable cutout pressure (bar)	Weight (in g)	Part No.	Part No. (RBS)
MDR-F 2H-S VdS	MDR-F 2 HAB SAA A XXXA007 A	-	0,1	0,35 ... 1	460	259060	On Request
MDR-F 2Hmax-S VdS	MDR-F 2 HAB SAH A XXXA007 A	-	0,1	0,35 ... 1	460	259077	On Request
MDR-F 10H-S VdS	MDR-F 10 HAB SAA A 040A050 A	0,3 ... 8,5	0,4 1,5	0,7 ... 10	460	259084	On Request
MDR-F 12H-S VdS	MDR-F 12 HAB SAA A 080A090 A	0,4 ... 11	0,6 1,5	1 ... 12,5	460	259091	On Request
MDR-F 16H-S VdS	MDR-F 16 HAB SAA A 110A120 A	0,4 ... 14,5	0,6 1,5	1 ... 16	460	259107	On Request

**Fire protection MDR -F .. Y...with plastic flange and Perbunan diaphragm**

**Pressure switch with industrial screw terminals version (industrial cage clamp version available).**

Pressure connection: H G 1/2" inner thread

Order reference	Type Code	Adjustable cut-in pressure (bar)	Smallest pressure diff. (bar)*	Adjustable cutout pressure (bar)	Weight (in g)	Part No.	Part No. (RBS)
MDR-F 2Y-S VdS	MDR-F 2 YAB SAA A XXXA007 A	-	0,1	0,35 ... 1	410	259145	On Request
MDR-F 2Ymax-S VdS	MDR-F 2 YAB SAH A XXXA007 A	-	0,1	0,35 ... 1	410	259152	On Request
MDR-F 10Y-S VdS	MDR-F 10 YAB SAA A 040A050 A	0,3 ... 8,5	0,4 1,5	0,7 ... 10	410	259169	On Request

The data provided above is for information purposes only and no warranty of accuracy or reliability is given. Ross Brown Sales Pty Limited reserves the right to change or modify this data without prior notice.

## Technical Data MDR-F

Technical data MDR-F standard version	
Rated operational current $I_e$ AC 1 $U_e=240$ V (1~)	10 A
Rated operational current $I_e$ AC 15 $U_e=240$ V (1~)	4 A
Rated operational current $I_e$ DC 13 $U_e=240$ V (1~)	0,1 A
Permissible motor rating 1~ 230 V	0,55 kW
Motor switching capacity (UL 508, CSA 22.2) $U_e=125$ VAC	0,5 HP
Motor switching capacity (UL 508, CSA 22.2) $U_e=250$ VAC	0,5 HP
Rated operational current $I_e$ (UL 508, CSA 22.2) $U_e=250$ VAC	15 A
Rated operational current $I_e$ (UL 508, CSA 22.2) $U_e=12$ VDC	6 A

Technical data MDR-F.(G) - gold-flashed contact	
Rated operational current $I_e$ $U_e=30$ V (1~)	400 mA
Permissible motor rating 1~ 30 V	12 VA
Motor switching capacity (UL 508, CSA 22.2) $U_e=125 - 250$ VAC	0,5 HP
Rated operational current $I_e$ (UL 508, CSA 22.2) $U_e=250$ VAC	10 A
Rated operational current $I_e$ (UL 508, CSA 22.2) $U_e=12$ VDC	6 A

Technical data MDR-F	
Vibration resistance 10 bis 1000 Hz	4 g
Degree of protection acc. to DIN 40 050/IEC 529 With rubber grommets	IP 54
Degree of protection acc. to DIN 40 050/IEC 529 With cable glands M20	IP 65
Ambient temperature range	- 20 °C .. + 70 °C
Cross-sections Cage clamp (without cable end sleeve)	1,5 mm <sup>2</sup>
Cross-sections Screw clamp	2,5 mm <sup>2</sup>

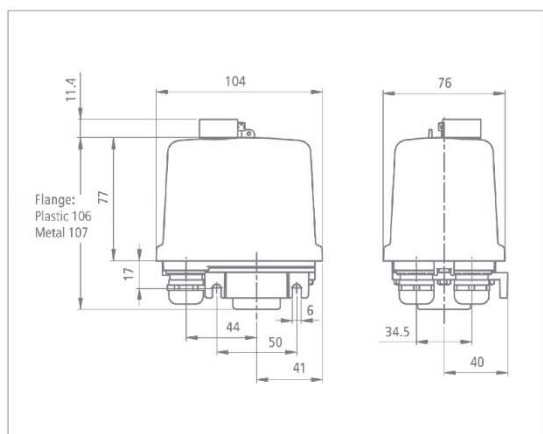
Technical data MDR-F		
Bursting strength / bar	MDR-F.H	4 x max. cut-out pressure
	MDR-F.HE	1,3 x max. cut-out pressure
	MDR-F.Y (< 12,5 bar)	4 x max. cut-out pressure
	MDR-F.Y (> 12,5 bar)	2,5 x max. cut-out pressure

Technical data MDR-F		
Perm. media temperature:	MDR-F.H / HH	+ 70 °C
	MDR-F.HV	+ 130 °C
	MDR-F.HE	+ 200 °C
	MDR-F.Y	+ 50 °C
Repeatability		<2% FS

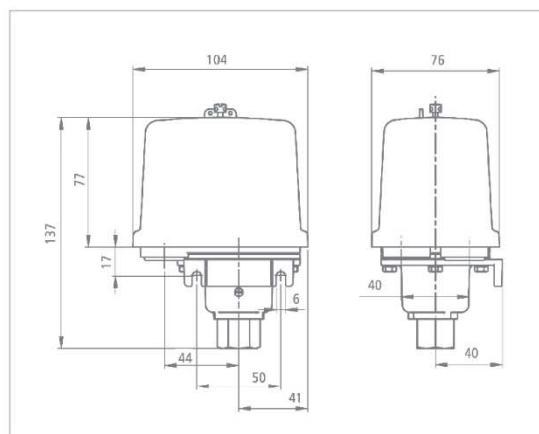
Media resistance MDR-F.	
Please see overview for more information.	

Attention: Please, regard the MDR-F instructions enclosing the pressure switch for the max. operating pressure and the max. inspection pressure.

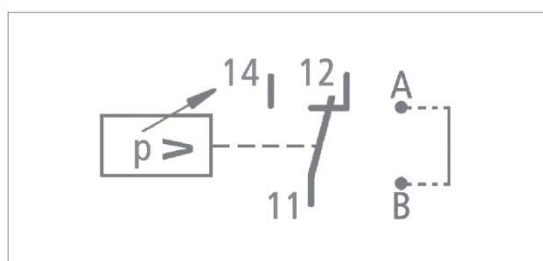
## Dimensions MDR – F / Circuit diagram



Pressure switch MDR – F.H / ..Y / ..HV



Pressure switch MDR – F.HH / ..HE



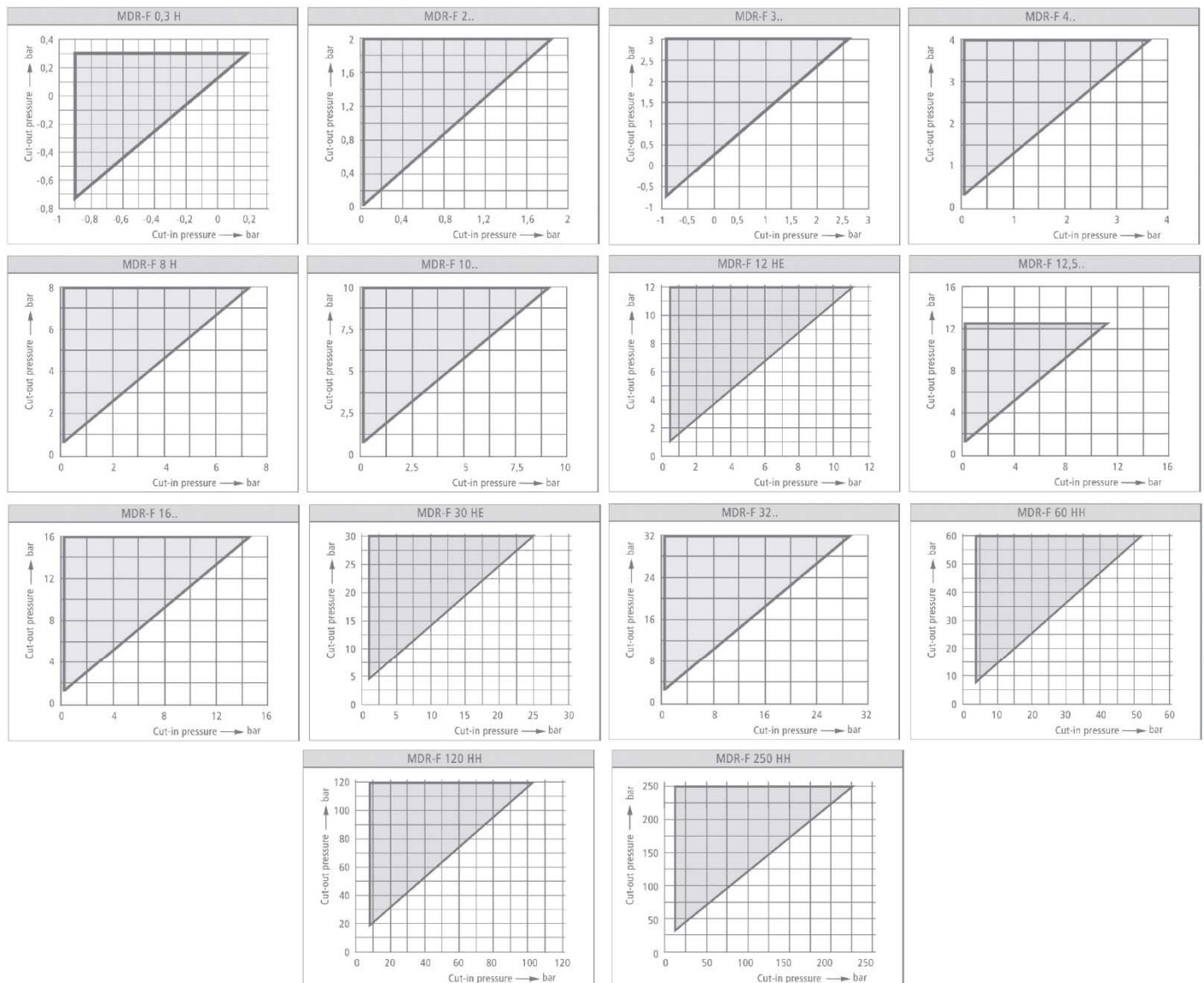
The data provided above is for information purposes only and no warranty of accuracy or reliability is given.  
Ross Brown Sales Pty Limited reserves the right to change or modify this data without prior notice.

## Accessories MDR - F

Order Reference	Description	Weight (gms)	Part Number	Part Number (RBS)
	<b>Cable glands</b>			
MDR-F M20 M	Cable gland M20 metal	35	254249	<b>3800075</b>
MDR-F M20 K	Cable gland M20 plastic	18	259503	On Request
	<b>Throttle</b>			
MDR-F D-32	MDR-F up to 32 bar	1	254256	On Request
MDR-F D+32	MDR-F as of 32 bar	2	254263	On Request
	<b>Covers</b>			
MDR-F Cover	MDR-F Cover, transparent, Standard	90	254270	On Request
MDR-F Cover R	MDR-F Cover, transparent, for manual reset	90	254287	On Request
	<b>Reset push-button</b>			
MDR-F RT-1	Reset push-buttons for mounting on cover R	25	254294	On Request

Additional accessories (e.g. pressure connectors) on demand

## Pressure Diagrams MDR-F



The data provided above is for information purposes only and no warranty of accuracy or reliability is given.  
Ross Brown Sales Pty Limited reserves the right to change or modify this data without prior notice.