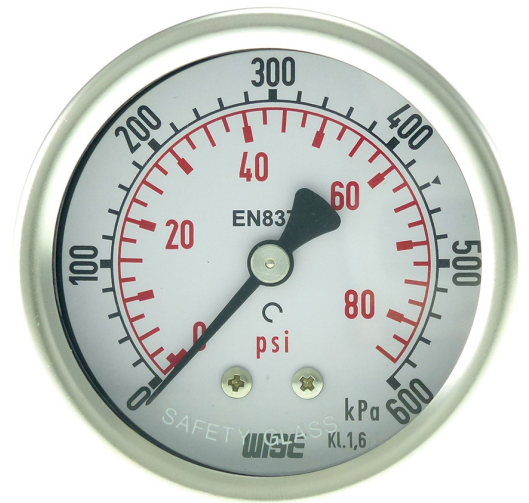


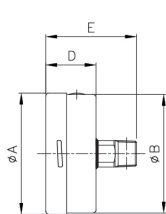
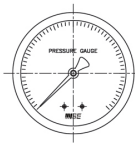
# 63mm CBM Stainless Steel Pressure Gauge

<b>Case and bezel material:</b>	304 Stainless Steel Liquid Fillable
<b>Connection:</b>	316 Stainless Steel
<b>Bourdon tube material:</b>	316 Stainless Steel
<b>Working temperature:</b>	Ambient = -40~60°C, Process = 60°C *
<b>Dial:</b>	Dual scale, Black kPa, Red psi on White Dial
<b>Ranges:</b>	-100~0 kPa to 0~100,000 kPa
<b>Connection:</b>	1/4" NPT Center Back Mount
<b>Window:</b>	Glass Lens
<b>Blowout Protection:</b>	Rubber Plug on Top
<b>Surge Protection:</b>	Internal Restrictor
<b>Over Range Protection:</b>	130% of Full Scale
<b>Movement:</b>	304 Stainless Steel
<b>Pointer:</b>	Standard Non-Adjustable
<b>Accuracy:</b>	1.6% of Full Scale
<b>Protection Rating:</b>	IP65

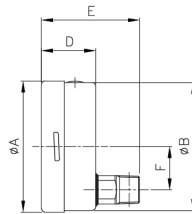
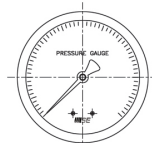


\* Formula:  $\pm 0.04 \times (t_2 - t_1) \% \text{ of F.S.}$  where  $t_1$  = reference temperature (+20°C) and  $t_2$  = ambient temperature in °C.  
 Temperature Effect: The variation of indication caused by effects of temperature is to be calculated by the above formula; which is to be added to the specified accuracy during measurement.  
 For higher process temperatures, please contact Ross Brown Sales.

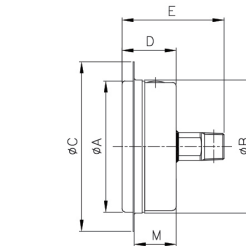
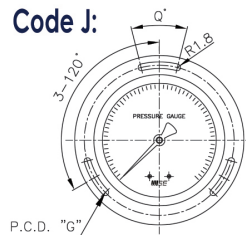
**Code F:**



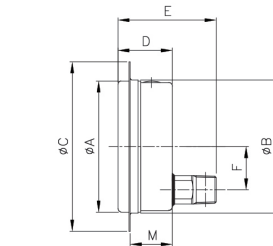
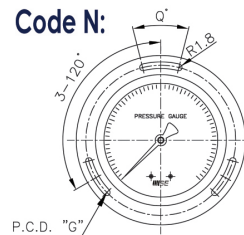
**Code G:**



**Code J:**



**Code N:**



Dimensions in mm

Type	Available Code	A	B	C	D	E	F	G	M	Q
P 252 63mm Dial	F	63.7			33	57				
	G	63.7			33	59	13			
	J	63.7	66	86	33	57		75	28	15
	N	63.7	66.2	86	33	57	13	75	28	15

Range (in kPa)	Centre Back Mount P/N (Code F)	Range (in kPa)	Centre Back Mount P/N (Code F)	Range (in kPa)	Centre Back Mount P/N (Code F)	Accessories
-100-0	1369208	0-400	1369224	0-8000	1369258	Front Flange P/N: 1369998
-100/+150	On request	0-600	1369226	0-10000	1369260	
-100/+300	On request	0-800	1369228	0-16000	1369262	Glycerine Filling P/N: 1369999
-100/+500	On request	0-1000	1369230	0-25000	1369264	
-100/+900	On request	0-1600	1369234	0-40000	1369266	Adjustable Restrictor 1/4" NPT M & F P/N: 2911133
-100/+1500	On request	0-2500	1369236	0-60000	On request	
0-100	1369218	0-4000	1369242	0-80000	On request	Maximum Pointer P/N: 1369992
0-250	1369222	0-6000	On request	0-100000	On request	
<b>Weight gms</b>	200			Add 70 gms for glycerine filling		

Revision: 0822

The data provided above is for information purposes only and no warranty of accuracy or reliability is given.  
 Ross Brown Sales Pty Limited reserves the right to change or modify this data without prior notice.